

A horizontal strip of a lush green forest with tall, thin trees and sunlight filtering through the canopy.

# Company Profile

*Presented by*

***ELTETE MALAYSIA SDN BHD (615258-M)***

***46 & 48, Jalan TPP 5,***

***Taman Perindustrian Putra,***

***47130, Puchong,***

***Selangor, MALAYSIA.***

***Tel : +603-8069 1354/1357***

***Fax : +603-8069 1358***

***Website : [www.eltete.com.my](http://www.eltete.com.my)***

# *Contents*

**ABOUT US**

**FORM OF BUSINESS**

**CODE OF CONDUCT**

**ENVIRONMENTAL POLICY**

**SUSTAINABILITY**

**CORPORATE INFORMATION**

**ORGANIZATION CHARTS**

**HEADQUARTER ~ ELTETE FINLAND**

**ELTETE SOUTH EAST ASIA ~ ELTETE MALAYSIA**

**OUR PRODUCTS**

**BUSINESS INDUSTRY**

**CUSTOMER CASES**

**OUR CERTIFICATES**

**QUALITY TESTING MACHINE AND EQUIPMENT**

**QUALITY AND RAW MATERIAL**

**GLOBAL NETWORK**

**ELTETE WORLDWIDE**

**THE INAUGURATION**

## ABOUT US

*Eltete Malaysia Sdn Bhd produces, markets, sells and develops high quality, environmentally friendly and competitive transport paper packaging solution based on customer requirements. With headquarters in Finland, our quality and product development is based on decades of experience which is converted to meet the needs of our customers, helping them to operate in a more productive and sustainable way.*

*Eltete's Management and Production team will continue to develop and innovate new ideas to cater for today's ever evolving transport packaging needs.*

### **COMPANY'S OBJECTIVE**

*The goal of Eltete is to produce and source high quality of transport paper packaging materials and provide on-time delivery to meet the needs of fast-growing market and achieve the highest satisfaction of our customers at all times.*

### **OUR VISION**

*To adopt the 3R philosophy (Replace, Reduce, Recycle) globally and contribute back to nature and the next generation. We aim to be one of the leading providers of cost effective and sustainable transport paper packaging solution in the world.*

### **OUR MISSION**

*To bring the knowledge of alternative materials to those who are in need of transport packaging. We will introduce our products and supply new cost-effective sustainable materials and technology solutions.*

### **CARING FOR NATURE – ENVIRONMENTAL CONSERVATION**

*By supplying 100% recyclable transport packaging products, we aim to help our customers achieved completed environmental acceptance throughout the supply chain.*

*All our strategies are geared towards total recyclability of products and process waste.*

## ***Form of business***

*Eltete Malaysia Sdn Bhd is a private limited company with its headquarter located at Finland.*

### ***History***

Eltete Malaysia Sdn Bhd is a subsidiary of Eltete Ltd of Finland. The company was established in year 2003 as sales office and became a manufacturing plant in year 2004. We are now the regional manufacturing plant for South East Asia and Asia Pacific regions. Being part of the Eltete Group, we work closely with other Eltete members globally to serve our customers better.

Eltete TPM Ltd is a global paper board refiner and one of the leading producers of 100 % recyclable transport packaging materials and solutions in the world. With headquarters in Finland, our quality and product development is based on decades of experience ( since 1974) which is converted to meet the needs of our customers, helping them to operate in a more productive and sustainable way.

Eltete TPM solutions are well-known in the packaging world for their strength and high quality. Innovative and sustainable transport packaging solutions are an excellent substitute for wooden or metal packaging. They are all 100% recyclable high-quality products made out of laminated compact paper board using the latest innovation and technology.

### ***The Future***

Here at Eltete, we know that our unrivalled market knowledge, sales network, advanced technology, standard concept, specialization and diversity are our main strengths that will continue to be so in future.

By developing these assets, we will continue to produce, market, sell and develop high quality environmentally-friendly and competitive transport paper packaging systems on the global market. We will continue to be highly flexible in our response to customer need. We aim to continue our recent dynamic global growth and to deliver a standardised level of quality, service and product range on a local basis to customers and business partners, wherever they are located.

### ***Ecological thinking...AND WOOD-FREE TRANSPORT PACKAGING***

It is not feasible to replace all wood in packaging, but in many cases a modern recyclable paperboard solution can do the same job. A solution in accordance with current recycling philosophy projects a good corporate image as well as reflecting a company's ability to react to change.

Eltete Malaysia offers a reliable, insect-free, non-fumigation and totally recyclable product option. We are globally known for our innovative, high quality packaging solutions such as FramePack, which are designed by combining components from our wide range of products. We are constantly creating new products and solutions for the benefit of our customers and our global production means we can supply worldwide yet on a local basis.

# Code of Conduct

The Eltete Malaysia code of conduct is based on principles, values, standards and rules of behavior that guide the decisions, procedures and systems of our global organization in a way that contributes to the welfare of our customers, employees and cooperation partners, and respects the rights of all constituents affected by our operations. Our activities are in accordance with good business conduct, marketing ethics, human rights and protection of the environment.

## RESPECT

- Respect human rights according to international standards.
- Treat others fairly and courteously without discrimination.
- Work as a team and help each other.
- Value different ideas, opinions and experiences.
- Allow the freedom of association according to local laws.

## RESPONSIBILITY

- Live by our own words and actions.
- Commit to good service and product quality.
- Provide a safe and secure working environment.
- Do not allow child and forced labour.
- Care for the environment.

## INTEGRITY

- Act ethically and honestly.
- Do not take part in corruption.
- Refrain from anti-competitive agreements.
- Be consistent in what we say and do.

Eltete Malaysia business is based on environmentally-friendly products. Our goal is to get as many new businesses as possible to take part in this important mission to reduce environmental impact by starting to use sustainable packaging materials. We take environmental aspects into consideration in new developments, material selection and production processes as well as in all other Eltete operations. We commit to helping our customers to achieve the targets they have set in their environmental policies.

The Eltete values are a right for each employee to conduct himself or herself according to this code. The Code is regularly reviewed and its implementation periodically monitored

## ***Environmental policy***

Eltete Malaysia Sdn Bhd manufactures and markets 100% recyclable transport packaging products that are in compliance with all relevant environmental legislations and regulations. We are continuously improving our machines and methods in order to reduce energy consumption in our production processes. Our raw material is taken from renewable resources. Any process waste is recycled.

**Our goal is to provide our customers with high-quality products and solutions for protecting goods in storage and during transport.** This prevents unnecessary financial loss through product damage and reduces the environmental impact. We also want to help our customers find the most suitable transport packaging solution, taking into account the whole packaging chain: maximum protection with minimal packaging material and subsequent recycling.

**Our management and employees act in accordance with the Eltete Malaysia Sdn Bhd Environmental Policy and Code of Conduct.** Our contractors / suppliers are also required to comply with this policy.

**We are committed to the protection of the environment,** including prevention of pollution and other specific commitment(s) relevant to the context of the organization.

**The Eltete Malaysia Sdn Bhd slogan, 3Rs, supports environmentally-friendly thinking.** We practise a “**replace, reduce, recycle**” approach to create best-in-class eco-friendly products.

**Replace** material with more environmentally-friendly alternatives.

**Reduce** packaging material.

**Recycle** easily and reduce environment footprint.



## *Sustainability*



### **3R (Replace, Reduce, Recycle)**

Replace-reduce-recycle leads us to use less material and transportation, which ultimately has a positive impact on CO<sup>2</sup> emissions.

We take eco-friendly aspects into consideration in new developments, material selection and production processes as well as in all other Eltete operations.

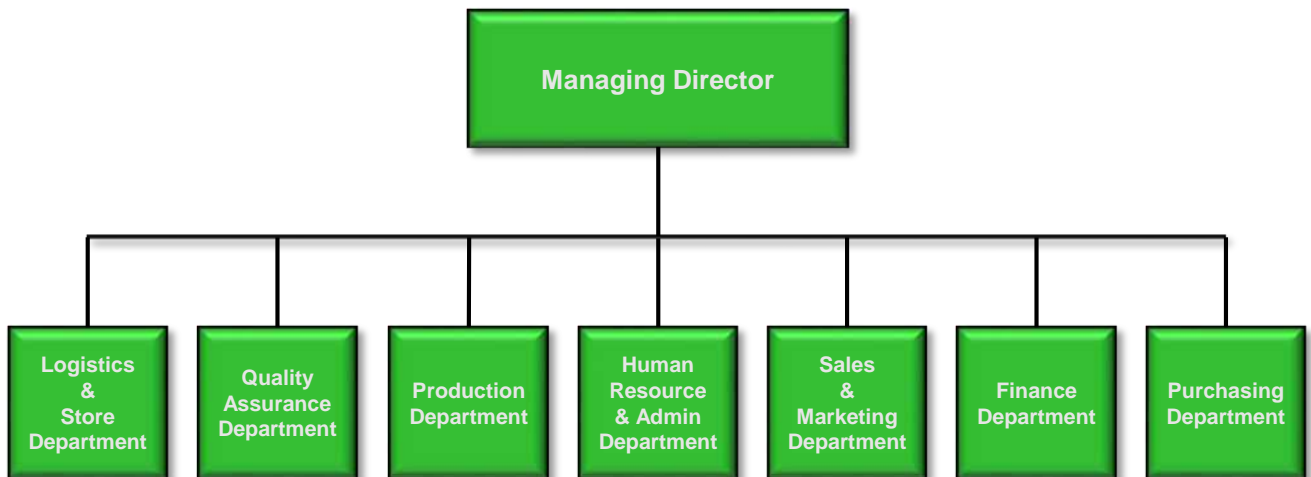
We are committed to helping our customers to achieve the targets they have set in their environmental policies.

## ***Corporation information***

<i>Directors</i>	BO HENRIK WOLTER OSTERMAN TSEN LEN CHU LEONG KIM FOOK
<i>Secretary</i>	NO.1-3R 3 <sup>rd</sup> FLOOR, BLOCK A, JALAN MAJU 3/1, TAMAN LEMBAH MAJU, 56100 KUALA LUMUR.
<i>Auditors</i>	ZAMZURI & CO. (AF1315) NO. 1-1C, JALAN PANDAN 3/10, PANDAN JAYA, 55100 KUALA LUMPUR.
<i>Bankers</i>	MAYBANK BHD PUCHONG JAYA BRANCH NO.7, JALAN KENARI 1, BANDAR PUCHONG JAYA, JALAN PUCHONG, 47100 PUCHONG, SELANGOR.
<i>Business Registration</i>	615258-M
<i>Business address</i>	46 & 48, JALAN TPP 5, TAMAN PERINDUSTRIAN PUTRA, 47130, PUCHONG, SELANGOR, MALAYSIA.
<i>Principal activities</i>	PRODUCE TRANSPORT PAPER PACKAGING PRODUCT
<i>Country of incorporation</i>	MALAYSIA



## Organization chart



# Headquarter

*Eltete TPM with its headquarters in Finland*

## Eltete Finland



## *Eltete South East Asia*

### Eltete Malaysia



*Specialized in sustainability transport paper packaging solution such as...*

- *Edgeboards*
- *Packaging profiles*
- *Slip Sheets*
- *Honeycomb board*
- *D-board light*
- *PallRun®*
- *The Box*
- *Paper pallet*
- *EB Interlock / FrameCut*
- *U-profile / UP with frame cut*
- *Flatboard*
- *Dunnage bags*

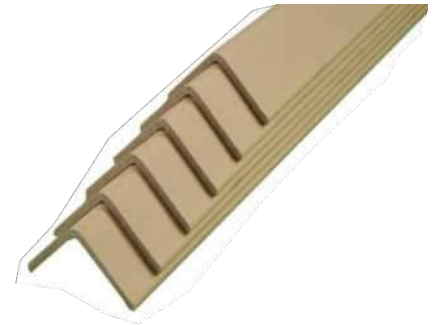


## ***Our products***

### ***Edgeboard , Corner board***

Edgeboard is an excellent all-round transport packaging product which is flexible, cheap, recyclable, easy-to-use and strong. It can be used either externally on pallet corners or inside boxes to give stacking strength.

Edgeboard is suitable for all kinds of palletization, stabilization and unitization. It is a neutral wood-free transport packaging element accepted all over the World without any fumigation requirements and hygienic enough to be used in the transport of food. Edgeboard gives your pallets the stability needed for.



### ***Slip Sheet***

The Slip Sheet or Push-Pull Pallet is a laminated solid kraftliner with high tensile strength, tear resistance and cob value. Eltete Group produces standard slip sheet models based on normal pallet sizes. Almost endless production possibilities mean that we can cater for your own individual need from a size, model and strength point of view.

Slip Sheets are often used for transport of goods where there is a need to optimize the use of space in the logistic chain. Use of Slip Sheets means savings in transport, material and storage costs. Returns which will be appreciated both by the supplier and the receiver.



### ***Honeycomb Board***

Eltete honeycomb board is a 100 % recyclable paper product. Its hexagonal inner cellular structure and superior raw material provide exceptional compression strength and rigidity, which can withstand impact and high loads for "heavy duty packaging".

This lightweight product has good cushioning properties that gives protection for transport packaging and also for a multitude of other applications. Thanks to its characteristics, the honeycomb board can easily be shaped or cut, converting it into the exact elements



## Our products

### *PallRun® , Pallet Runner*

PallRun®/Pallet Runner are a highly viable alternative to wooden runner.

Eltete PallRuns® are the basic elements in the construction of paper pallets. They can be either fixed directly on to carton boxes or used together with carton boards or honey comb board to form Paper Pallet.



### *Paper Pallet*

100% recyclable and environmentally friendly paper pallet, standard and tailor-made according to customer need. Weight approximately 3-6kgs vs wooden 15-25kgs , saving in transportation especially airfreight.

Our paper pallet complies in green policies and ISPM-15, it projects a better company image.



### *EdgeRunner®*

**A combination of edgeboards and PallRuns®, is a new 4-way pallet alternative.** It can replace traditional pallets such as wooden pallets or plywood pallets and also optimized the use of material and space; you will be able to load more and get all the benefits of strong sustainable packaging. Use it with corrugated boxes, shop displays, with a top board or directly under your product.



### *Dunnage Bags*

Meet the tough demands of modern shipping and transport with Eltete range of inflatable dunnage bags. The quick, convenient and cost-effective way to ensure protection for goods in transit. PROSAK dunnage bags can be used in containers, trucks, trains and ships. They cushion, protect loads against impact and prevent movement.



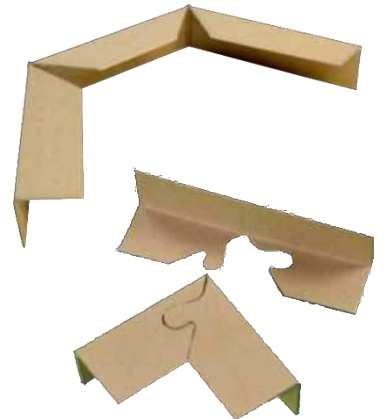
### *The Box*

“An Optimal Use of Transport Packaging Materials” Packaging of white goods and similar products is a demanding task, requiring a combination of economy and strength, which ensures that the fragile products are perfectly protected. The Box is not only light, compact and economical, but also very practical in the logistics chain.



### *Frame Cut*

Frame Cut is a 100% recyclable paper product designed to provide protection especially at corner area. The design come with interlock or without interlock to provide greater flexibility in corner protection.



***Lid – Top and Bottom*** It can combine with honeycomb board or other material for cushion, stability protection.



### *Wrap around*

Wrap around protect edges of products with different shapes. It has been designed for rolls, round tables and other round or irregular objects.

Our Wrap around come with varies sizes, its provide flexibility to suit customer need.



### **FramePack®**

FramePack® is an excellent single-material alternative to wooden, plastic and metal frames as well as a substitute for heavy boxes. With a combination of different components from our product range, we can provide our customers with the optimal packaging for their needs. A suitable packaging profile will be chosen based on a study of each individual application depending on strength and other requirements.



### **U-Profile**

Design to provide protection for all 3 sides, flexible option for uneven objects. It prevent damage caused by heavy impact. It act as a shock absorber for door openings, stairs or fragile equipment during renovation or repair work.



### **U-Profile with v-cut**

U-Profile with v-cut provide flexibility option for rectangular and also uneven shape, it is 100% recyclable and ISPM 15 compliant

### **Flatboard**

**Designed to replace materials like hardboard, MDF and chipboard, which are hard to recycle.** Due to its strength, size and quality, flatboard is a product with endless possibilities.



### **D-Board Light**

**D-Board Light (DBL)** is a lightweight but strong 100% recyclable multimedia honey board excellent for any visual communication (VISCOM) purpose; whether in the **graphic or advertising sector.**



## *Business industry*

In respect to our customers we keep their names confidential, but we are happy to tell you in which sectors our references are, including some solutions we have supplied them.

Please enjoy this presentation of our customer cases. We hope that you will get inspired and contact us for more information, so that you could also benefit from this opportunity of a 100% recyclable laminated carton-based alternative for your transport packaging.



**Automotive industry**



**Consumer goods**



**Food and beverage industry**



**White goods industry**



**Pharmaceutical industry**



**Steel industry**



**Logistics industry**



**Furniture industry**



**Other industry**



## Customer cases

There has been an increased demand for **Slip Sheets** in export shipments for these industries. This includes **frozen food, confectionary, animal food, dairy products, instant mix powders, alcoholic beverages, olive oil, balsamic vinegar**, you name it! Today you can find exotic foods and other foreign products in your local supermarket. We are all interested in trying new things, which leads to an increased need of mobility of products. Again, sustainability in packaging material, low cost of Slip Sheets and huge savings in freight cost, are the reasons for its popularity (see cost savings calculation below).



*Food and beverage industry*



*Consumer goods industry*

Products that we consume on daily bases (**cleaning products, toothbrush, glassware, electronics**) often come to shops through distribution centers, some of them are also exported overseas. In these cases, **Slip Sheets** offer our customers the best cost effective palletless way of transporting their goods. They can maximize the amount of goods that fit in a truck or a container. Economic benefits are huge as you can see in the calculation below, let us calculate your savings and tell you more about other benefits.

**Logistic companies** who are exporting and packing goods on behalf their customers often prefer Slip Sheets instead of wooden pallets. We also see more demand in this sector

The main drivers of the growth of pharma industry are increased global demand for medication from emerging economies. An ageing population, an increase in chronic diseases, antimicrobial resistance and stricter environmental and medical regulation are all boosting the industry.

The future of pharma packaging will see a shift towards more sustainable materials, moving away from plastic to new materials in product packaging. Choosing fiber-based material as transport packaging, has brought many of our customers closer to their sustainability targets and reduction of CO2 emissions. Also freight cost in air shipments has reduced overall cost significantly when using **paper pallet solutions**.



*Pharmaceutical industry*



*White goods industry*

Changing from EPS, metal and wood to **Packaging Profiles** has reduced cost, made the handling safer and easier due to light weight of the packaging. Yet needed strength values have been reached as you can see in this photo. Stacking strength of the Profiles is amazing, our customer has been stacking 5-6 ovens on top of each other. We call this solution "**FramePack®**". The trend is to reduce material by optimizing it to each individual application. We know how, just ask us and we can study your packaging needs.



*Furniture industry*

Eltete solutions can be tailor made for different needs by combining different component the optimized strength and use of material. Overpacking is out. Our aim is to use minimizing is in!

Since decades Eltete has supplied the world's top steel producing companies. **Heat-sealed Wrap-Around edge protection** is used for **steel coils** and straight profiles for **strapping or corner protection** for **long steel sheets** or **steel plates**. Unique anti corrosion treatments and special modifications have been applied and added to the profiles in order to meet the demanding needs of this sector. Printing of brands is also preferred by some of our customers.

Wrap-around edgeboard can also be used as protection for **paper rolls, drums** and **other round objects**.

**Aluminium industry, laminate board industry** and **forest industry** are also using similar edgeboard packaging for long objects



*Steel industry*

## Our Certificates

*Eltete Malaysia is an ISO 9001 certified company.*



*Eltete Malaysia has joined Sedex membership and audited by Bureau Veritas and comply with Nestle Responsible Sourcing Audit Program.*





#### **ISO 14001**

***Eltete Malaysia is moving towards ISO 14001:2015  
to enhance our environmental management system and performance.***

***We always seeking to manage our environmental responsibilities  
in a systematic manner that contributes to the environmental pillar of  
sustainability.***

#### **ISO 45001 (BS OHSAS 18001)**

***Eltete Malaysia is moving towards ISO 45001:2018  
to improve employee safety, eliminate hazards, minimize workplace risks  
and create better, safer working conditions.***

***We always seeking to improve our occupational health and safety management  
system to prevent work-related injury and ill-health.***



# Quality Testing Machine and Equipment

We practice high standard of product quality control, to make sure our products is in line with the industry highest standard.

Stacking requires high-quality raw material and extra strong profiles, which Eltete is able to produce using special methods. A suitable packaging profile will be chosen based on a study of each individual application depending on strength and other requirements.

The final product is tested by our rigorous quality control. We will be able to provide compression test, bending test and also strapping test in house when needed.



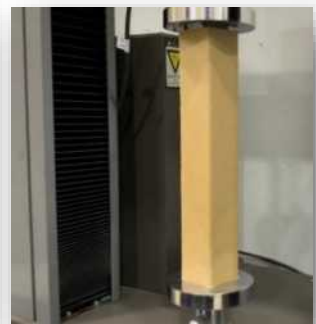
*Universal Testing Machine*



*PallRun® Test*



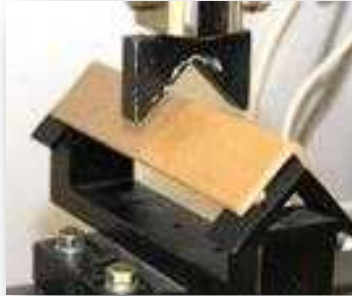
*Compression Strength Test for various products*



# Quality Testing Machine and Equipment



*Bending Strength Test for Honeycomb Board*



*Strapping Strength Test for Edgeboard*



*Tensile Strength Test for paper & Slip Sheet*



*Bending Strength Test for various products*



*GSM Test*



*Moisture Content Test*



*Thickness & Angularity Test*

## ***Quality and Raw Material***

Our products are well-known in the packaging world for their **strength and high quality**. The general raw material is kraftliner, testliner, coreboard and other similar recycled paperboards.

**Carefully selected raw materials** with a long fiber structure and a special production method are the keys to an extraordinary product with unbeatable strength values. A laminated compact carton board product gives strong protection even from the most powerful shocks that threaten products during their transportation.

**The glue** used in the lamination process is water-soluble PVA. It complies with food hygiene standards and is classified as non-hazardous and non-toxic.

**No environmentally harmful fluids or solvents** are formed or used at any stage of the production process. All process waste is sorted, shredded, baled and forwarded to the paperboard industry for recycling.

**Paper packaging needs no special sterilization treatment** as wood does, and is accepted in all countries without any restrictions.



## *Global network*



# Eltete worldwide

## Europe

### Finland – Headquarters

Production / Sales  
Eltete TPM Ltd  
P.O.Box 94,  
Varastokuja 5,  
07900 Loviisa,  
Finland  
Tel: +358 10 505 6450  
info1@eltete.com

### Italy

Sales  
Eltete TPM Italia  
Via F. Ferrucci 22  
20145 Milano,  
Italy  
Mobile: +39 348 511 2923  
Giovanni Bacchi  
giovanni.bacchi@eltete.com

### Spain, Portugal

Production / Sales  
Eltete Spain S.L.  
Ctra. Buñol-Godelleta  
KM. 1,2  
Buñol (Valencia),  
Spain  
Tel: +34 962 501 500  
Fax: +34 962 500 878  
Iovanna Espert  
iovanna.espert@eltete.es

### Bulgaria

Sales  
Eltete Bulgaria Ltd.  
60, Zlatitsa Str.  
Sofia 1510,  
Bulgaria  
Tel: +359 2 945 5285  
Fax: +359 2 945 5286  
www.eltete-bg.com  
Peter Petkov  
office@eltete-bg.com

### France, Belgium

Sales  
info1@eltete.com

### Lithuania

Production\*  
info1@eltete.com

### Latvia

Sales  
Eltete Riga Ltd.  
Ganību dambis 7A  
LV-1045 Rīga,  
Latvia  
Tel: +371 67501680  
Fax: +371 67501681  
Dmitrijs Užgalovs  
eltete@eltete.lv

### Sweden, Norway, Denmark

Sales  
Tanja Aho  
tanja.aho@eltete.com  
Tel: +358 (0)10 505 6470

### Estonia

Sales  
Eltete Eesti OÜ  
Paavli 2a,  
10412 Tallinn,  
Estonia  
Tel: +372 650 0078  
Fax: +372 650 0079  
Priit Tomson  
priit@eltete.ee

### Poland

Production / Sales\*  
Packprofil sp. z o. o.  
ul. Zakładowa 3  
47-110 Kolonowskie  
Poland  
Tel: +48 77 400 43 50  
Fax: +48 77 461 14 85  
Rafał Świerczok  
rswierczok@packprofil.pl

### Russia

Production / Sales  
Eltete St.Petersburg  
Kutysheva str 8-A Maloe Verevo,  
Leningradskaya oblast Gatchinskiy distr.  
St. Petersburg 188354, Russia  
Mobile: +7 921 947 2699  
Tel: +7 812 454 5510  
Fax: +7 812 454 5511  
Alexander Malyugin  
alexander@eltete-spb.ru

### Germany, Austria, Switzerland

Sales  
Torsten Gell  
torsten.gell@eltete.com

### Northern/Western Germany, Netherlands

Sales  
Michael Otto  
michael.otto@eltete.com

## South America

### Argentina

Production / Sales  
Eltete Argentina S.A.S.  
Commercial Office  
Arcos 3161 4 A  
(1429) Buenos Aires,  
Argentina  
Tel: +54-11-4702-0474  
Gustavo Ghisletti  
gustavo.ghisletti@eltete.com

### Colombia

Production / Sales\*  
TPM Colombia S.A.S.  
Km. 2,5 Aut. Bogotá-Medellín  
Vía Parcelas  
Parque Industrial Lutransa  
Bogota,  
Colombia  
Tel: +57 (1) 3099281  
Juan Carlos Reyes  
juancarlos.reyes@tpmcolombia.com

\*partnership production plant/sales office

## Asia

### Malaysia, Singapore, Indonesia, Thailand, Australia, Philippines, New Zealand

Production / Sales  
Eltete Malaysia Sdn Bhd  
No.46 & 48, Jalan TPP 5  
Taman Perindustrian Putra,  
47130 Puchong  
Selangor Darul Ehsan,  
Malaysia  
Tel: +6 (03) 8069 1354 Ext: 101  
Fax: +6 (03) 8069 1357 / 9381  
Mobile: +6013 390 2481  
Samantha Tsen  
samantha@eltete.com.my

### China, Taiwan

Production / Sales  
Shanghai Eltete Packaging Technology  
Co. Ltd.  
508th Xiao Nan Rd,  
Feng Xian District  
Shanghai 201401,  
China  
Tel: +86 21 3365 5088  
Fax: +86 21 3365 5199  
Ji Shuang  
jishuang@eltete.com.cn

### Vietnam, Cambodia, Laos, Myanmar

Production / Sales  
Eltete Vietnam Co. Ltd  
Lot 3, Binh Duong Industrial Park,  
An Binh Ward, Di An Town,  
Binh Duong Province, Vietnam  
Tel: +84 274 3 793530 / 531 / 529  
Fax: + 84 274 3 793528  
Mobile: +84 90 834 0895  
Helen Dao Kim Yen  
[yen@eltete.com.vn](mailto:yen@eltete.com.vn)

### Korea

Sales  
Eltete Korea  
Ms. Christina  
gaouu@eltete.com.cn

### India

Production / Sales  
Eltete India Transport Packaging Company Private Ltd. CIN  
U63090GJ2001PTC084350  
Plot No. 57/ I/1, 1st Phase, Road A- G.I.D.C,  
Vapi, Valsad District- 396195,Gujarat, India.  
Tel: +91(0)260 6541653,6541654,9824407333  
Fax: +91(0)260 2425474  
Mobile:+91(0) 9824171677  
S.Venkatesh  
venkatesh\_vapi@eltete.co.in

### Japan

Production / Sales\*  
Moriya Sangyo Co. Ltd  
10-7,3-Chome, Hanaten Nishi  
Jyoto-Ku  
5360011 Osaka  
Japan  
Tel: +81 6 6969 9835  
Fax: +81 6 6969 2551  
Mao Watanabe  
mwatanabe@moriyas.co.jp

# The Inauguration



The inauguration of Eltete Malaysia Sdn Bhd new factory in Puchong, Malaysia took place on the 12<sup>th</sup> of December 2018.

This is a great new achievement for Eltete TPM Group.





ELTETE



ELTETE

*Your local partner in global business*